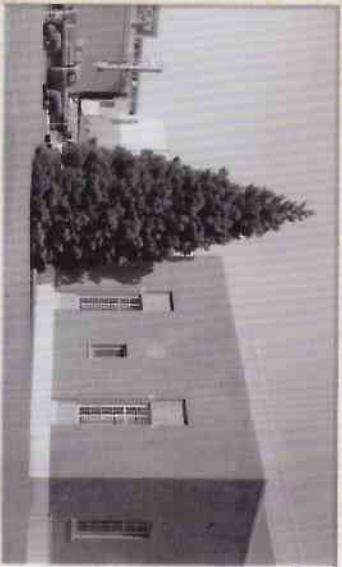


MORE HISTORICAL NOTES:

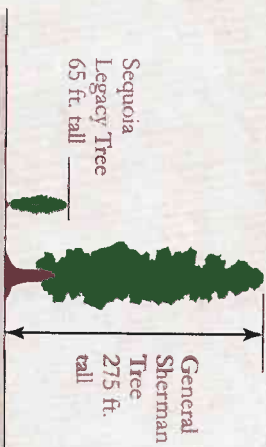
- For nearly a century, Visalia has been known as the “Gateway to the Sequoias”
- George Stewart, a long time Visalia newspaperman, was instrumental in getting National Park status for Sequoia and General Grant, earning him the unofficial title of “Father of Sequoia National Park.”
- On September 25, 1890, Sequoia National Park was designated by President Harrison and is the second oldest National Park.
- On July 14, 1915, a group of influential men known as the Mather Mountain Party met for dinner at the Palace Hotel in Visalia. They began a two week trek across the Sierra. Inspired by their experience, these men were instrumental in the creation of the National Park Service in 1916.



The Sequoia Legacy Tree in the 1930s

SEQUOIA LEGACY TREE FACTS:

- Planted here as a sapling in February 1936
- In July 2015, the tree measured 41 inches DBH (Diameter at Breast Height) and the canopy width was about 18 feet. It was estimated to be 65 feet tall.



- Giant sequoia trees (*Sequoiadendron giganteum*) are found between the 4,000 to 8,000 foot elevation where conditions are ideal for their growth. Sequoia and Kings Canyon National Parks boast many of the world's largest trees by volume.
- The General Sherman Tree, found in Sequoia National Park, is the largest in the world at 52,508 cubic feet. The General Grant Tree is the second largest at 46,608 cubic feet.
- The largest of the sequoias are as tall as an average 26-story building, and their diameters at the base exceed the width of many city streets.

Take a Closer Look: The circumference of the General Sherman Tree (about 102 feet) is indicated by stone and fencing around the Sequoia Legacy Tree.

THE CAL WATER DEMONSTRATION GARDEN

Carefully planted away from the drip line of the Sequoia Legacy Tree, this demonstration garden features drought tolerant garden plants that use very little water.



California Water Service has an industry-leading conservation program. You can learn more at calwater.com/conservation. You can also visit the Cal Water Demonstration Garden to get water-efficient ideas for your own landscaping.



The Sequoia Legacy Tree is located on the west side of the post office in downtown Visalia, California.



Sequoia Legacy Tree
Planted 1936 • Visalia Post Office

THE HISTORIC SEQUOIA LEGACY TREE

In February 1936, Guy Hopping, Superintendent of General Grant National Park (now Kings Canyon) and Nathan Levy, Visalia Postmaster, planted a pair of sequoia trees on either side of the Downtown Visalia Post Office. The trees, a mere three years old at the time of planting, were brought by Hopping from Grant Grove National Park. During the winters, Hopping worked from an office in the basement of the beautiful Art Deco post office, built in 1934.

Although the tree on the east side of the building was removed in the 1980s due to poor health, the surviving tree stands as a symbol of the strong relationship Visalia still enjoys with its mountain neighbors.



Nathan Levy and Guy Hopping with one of the newly planted Giant sequoias.

SINCERE THANKS

THANK YOU TO OUR SPONSORS:

California Water Service
Seals Construction – Matt Seals
Sequoia Parks Conservancy
Sierra Designs, Inc. – Kay Hummacher
Tulare County Historical Society
Tulare County Supervisors
Visalia Heritage, Inc.

ADDITIONAL THANKS TO:

Beverly Newman in honor of her father,
Richard Switzer Newman
City of Visalia – Mayor Warren Gubler
City of Visalia
Downtown Visalians, Inc.
Lane Engineering
Sequoia & Kings Canyon National Parks
Southern California Edison
US Postal Service
Visalia Breakfast Lions
Visalia Charter Oak Lions
Visalia Mall
Visalia Sunset Rotary



A PROJECT OF:

For more info:
www.visitvisalia.org/sequoiatree
(559) 334-0141

Follow us at VisitVisalia on Facebook, Twitter and Instagram.



A GIANT GROWING IN OUR MIDST

the SEQUOIA LEGACY TREE



Giant Sequoia
Planted 1936 • Visalia Post Office